

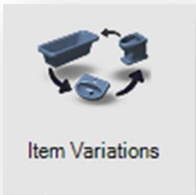


ViSoft® Premium

News in Update 2011-2

1 NEW FUNCTIONS

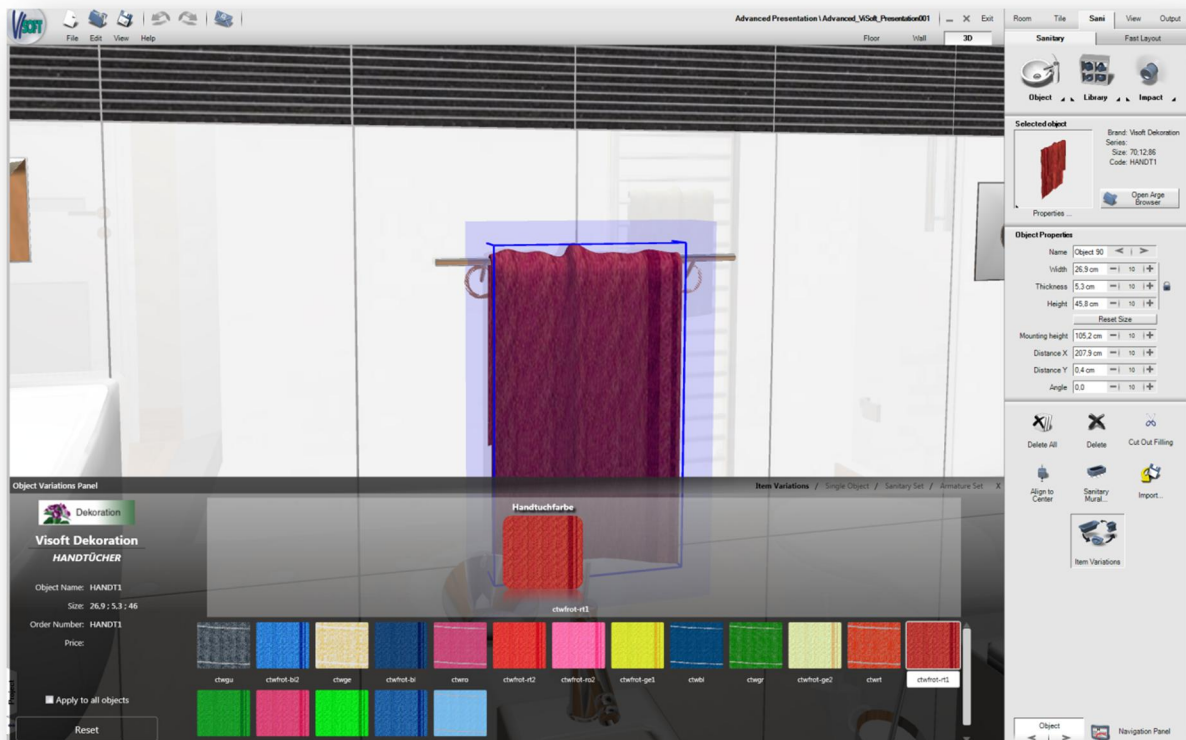
1.1 ITEM VARIATIONS



Transparent selection menus are becoming more and more common in different program functions of ViSoft Premium. From this version we use one also for sanitary ware / decoration material and color assignment. This makes working in 3D view easier and speeds up the process of planning.

In the menu **Sani – Sanitary** select one of the previously placed sanitary ware or decoration

objects. In 3D view set your viewpoint in a way that you're facing the selected object. While it is possible to use this function also in 2D views Floor / Wall it's certainly the most interesting using 3D view by enabling the quickview selection button **3D**. Click button **Item variations**. A semi-transparent **Objects Variation Panel** will appear in the lower half of your screen. It contains all available colors / textures for selected object. Click any one of them and your selected object will immediately change. When you're doing this in 3D standard commands for camera movement are in effect. By clicking and dragging your mouse above the Objects Variation Panel you will pan the camera. For moving the camera you



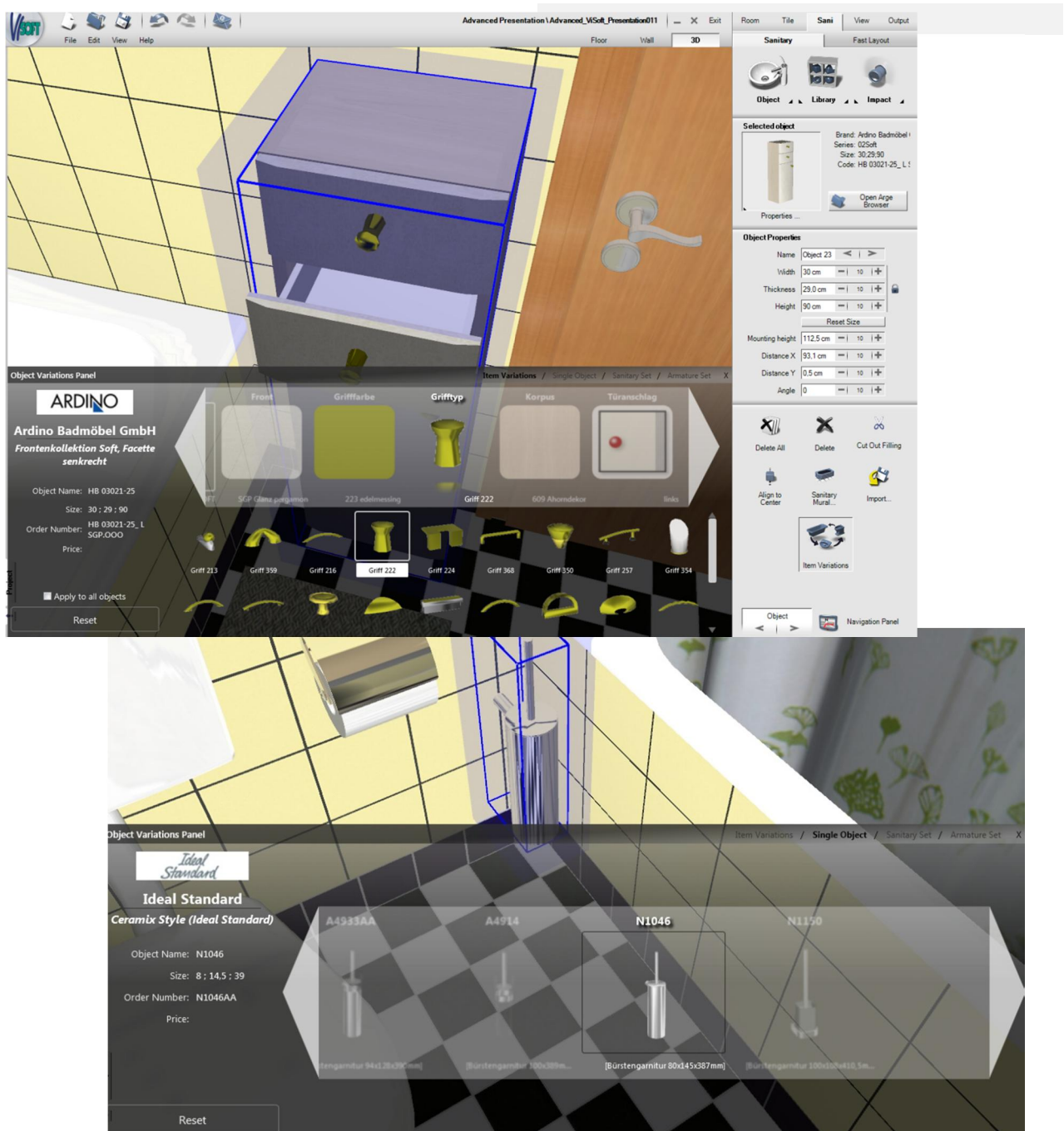
can use W A S D keys on your keyboard or the cursor keys.

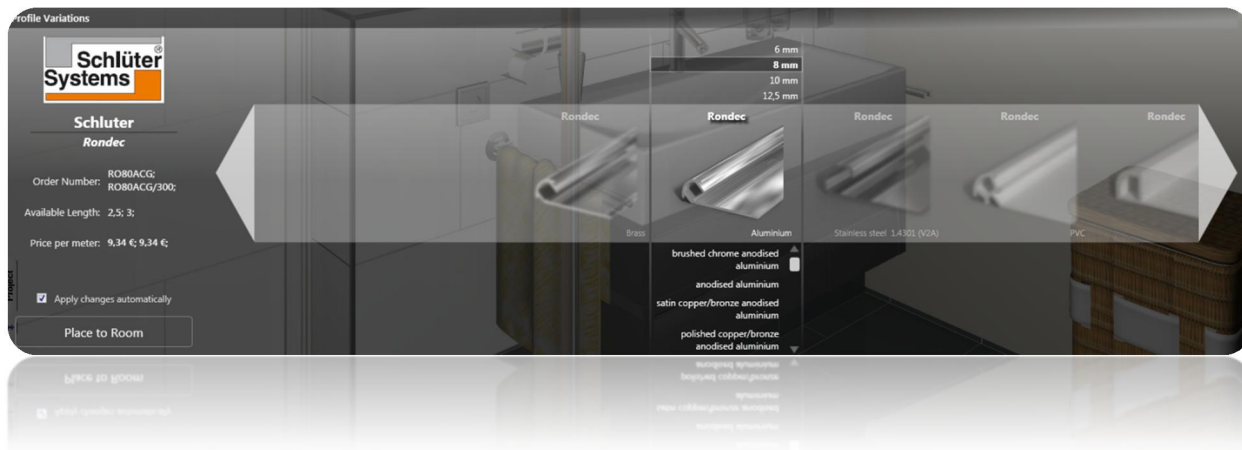
By clicking **Reset** button selected object appears in its original color / texture. Close the Objects Variation Panel by clicking the X on its top right corner.

In case if you have several objects of the same type, like a set of furniture, now you are able to change variations of all placed items

simultaneously. In the left-bottom corner of semi-transparent panel you have to enable **Apply to all Objects** switch. In this case, the changes you make will be applied to all same items in your project. This enables to change all furniture handles or surface materials with one click.

Interface of Single Object Variation also was improved significantly.





1.2 SCHLÜTER PROFILE-VARIATIONS

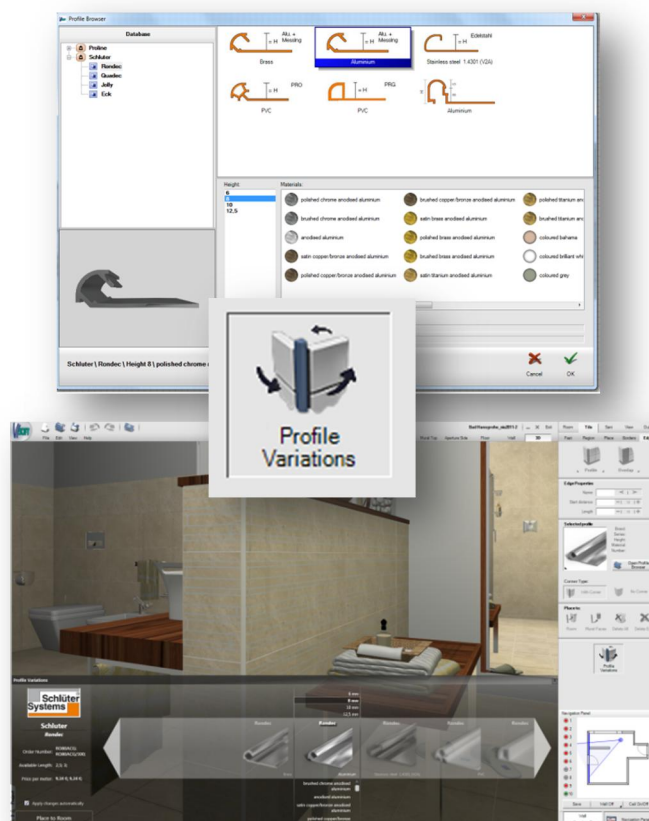
The improved profile selection comes now in a form of a transparent scroll-bar. Click on the triangle on the left or right side of the scroll bar to browse through the available profile forms. Placing of profiles in this way is much quicker and easier. It also contributes to rather effortless selection of profile in suitable form and size. The result is intuitive work because of photo realistic presentation.

The first version of this new way of handling with profiles, which is a result of interfirm cooperation between Schlüter Systems and ViSoft, has already been put on display in the fair Bau 2011 in January. Now is this profile scroll-bar a part of our latest Update 2011-2. Its roots are in new developed area of item variations (see also 1.2)

To enable the profile scroll-bar click on button Profile Variations in Tile – Edges menu. Click on the grey arrow buttons in shape of a left / right triangle to browse the available products. In the middle of the scroll-bar you can see currently selected profile presented with high quality preview picture. Above the picture you can choose between possible sizes. In the similar way you can select

available materials under the picture, for example colored light grey.

Confirm your selection by clicking the button **Place to Room**. If you wish to immediately see any currently selected profile applied in the room activate the option **Apply changes automatically**. Any change is at once shown in the 3D view.



One particular advantage of the new profile scroll-bar is immediate applicability in 3D view.

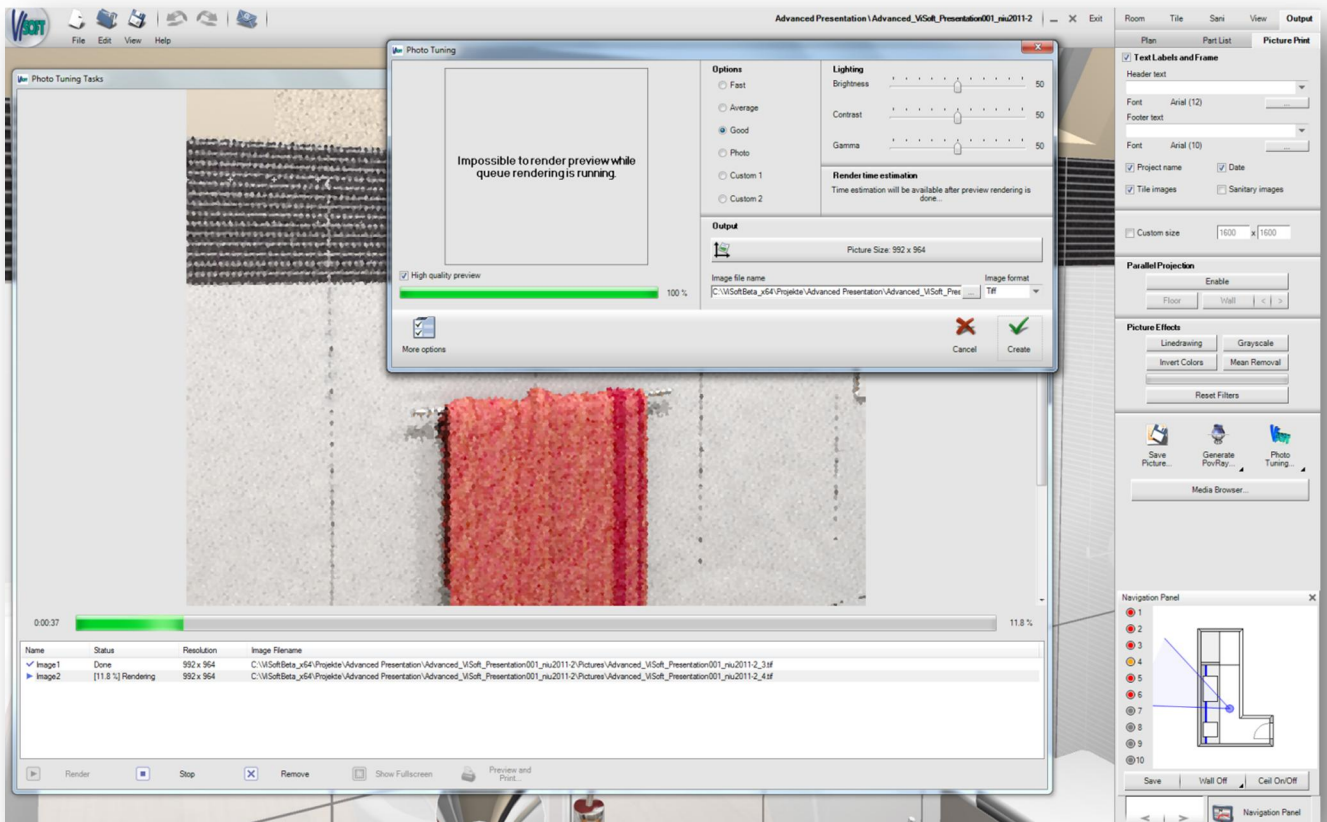
1.3 QUEUING IN PHOTO TUNING

Now you won't need to take a coffee break or put on hold your work with ViSoft Premium while Photo Tuning is calculating your picture. The newly developed task manager takes control of the rendering queue and enables picture calculation in the background. After starting the calculation of your first picture in the same way you're used to simply minimize the task manager window called **Photo Tuning Tasks** and close the Photo Tuning menu. Select another viewpoint and left click Photo Tuning button again. As you will notice the high quality preview is disabled while the calculation of another picture is already in process.

To open the task manager again simply right-click the Photo Tuning button at any time. In the bottom of the task manager screen there are control buttons. By using them you can

stop / start or remove the currently selected picture from the queue. It is also possible to show renderings in full screen mode and print pictures.

Task manager brings you a premium advantage: continue working on your project or even start a new one while the Photo Tuning is rendering one or more of your pictures in the background. Be advised that Photo Tuning rendering needs lots of processor resources. This means that ViSoft Premium will work a bit slower while photo quality pictures are being rendered in the background.



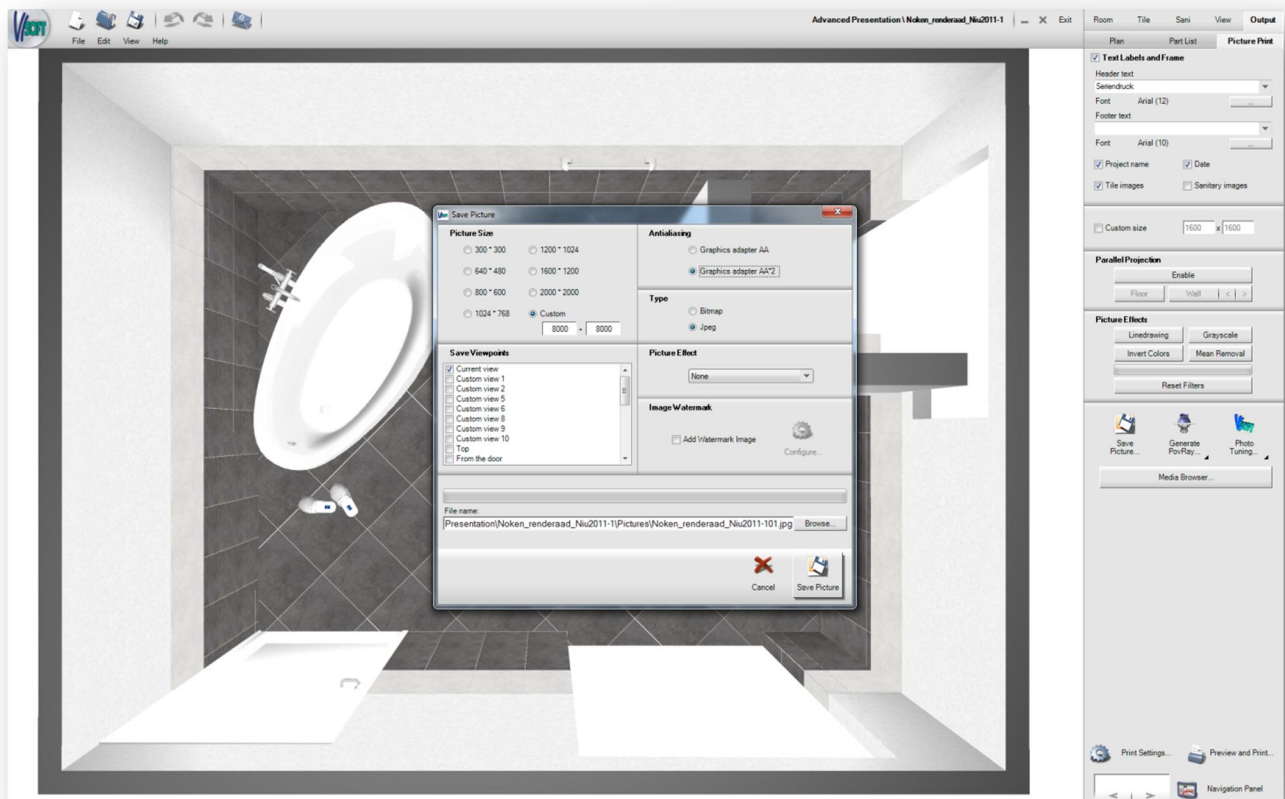
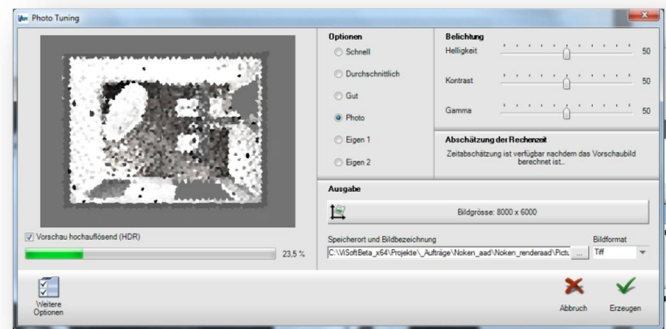
1.4 64-BIT VISOFT PREMIUM VERSION

For all of you who use a 64-bit operating system a 64-bit version of ViSoft Premium is ready for installation.

64-bit operating systems can work with more RAM. This means for example much quicker ViSoft Premium responses while Photo Tuning rendering is being performed in the background. However, the picture calculation time will not be any shorter than on 32-bit version. Also Living Wall users will be able to observe much better performance of their system when working with high quality 3D view settings of their Living Wall.

Before trying to install the 64-bit version please observe the following:
Your computer must have 64-bit processor and at least 6 GB RAM. 64-bit operating system has to be installed. Microsoft Office

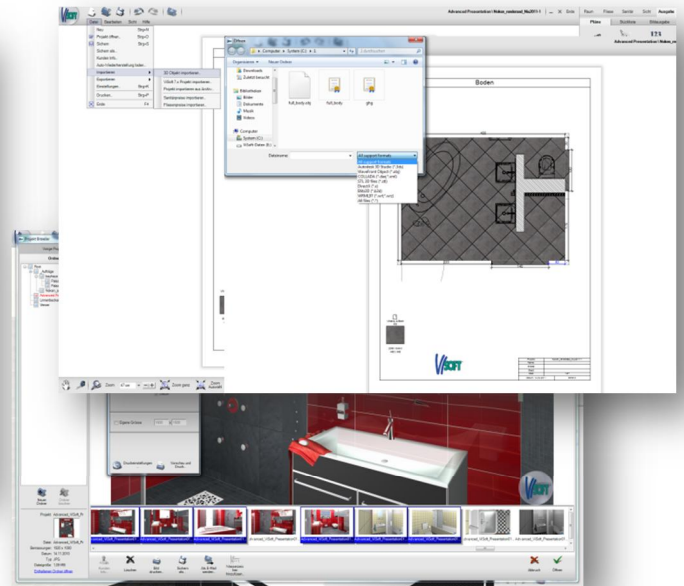
users must use 64-bit Office version – 32-bit Office versions are NOT supported and must be uninstalled before installing ViSoft Premium 64-bit.



1.5 ENCIRCELING THE OBJECT DURING ANIMATION

The animation in menu View – Advanced is now using surprising and insightful viewpoints

Further information is available on our telephone customer service.



which make a decision for a particular water tap or sanitary ware object much easier. Using the mouse click you can completely circle the object and observe it from every side. This emphasizes the exclusivity of choice, raises forth the design and form and prevents incorrect decision making, for example taps that do not work well with certain types of washbasins...

1.7 MULTIPLE PICTURE PRINTING

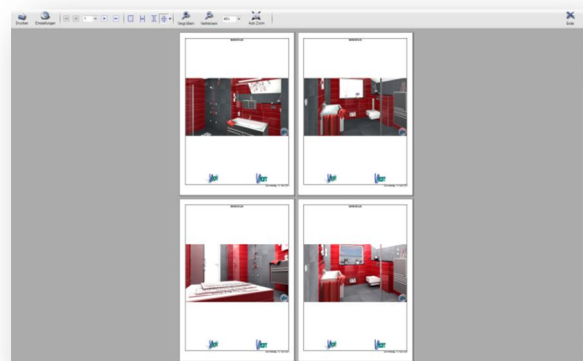
Now it's possible to print multiple pictures from Mediabrowser found in menu Output – Picture print. Select several pictures while holding the CTRL key then click Preview and Print.

1.6 STL-FILES IMPORT / EXPORT

ViSoft Premium is now able to import / export also 3D data in STL format. With this improvement data exchange between other professional and CAD programs becomes even easier.

Further advantage: many 3D files available on internet for free are in STL format. You can now import them to your projects.

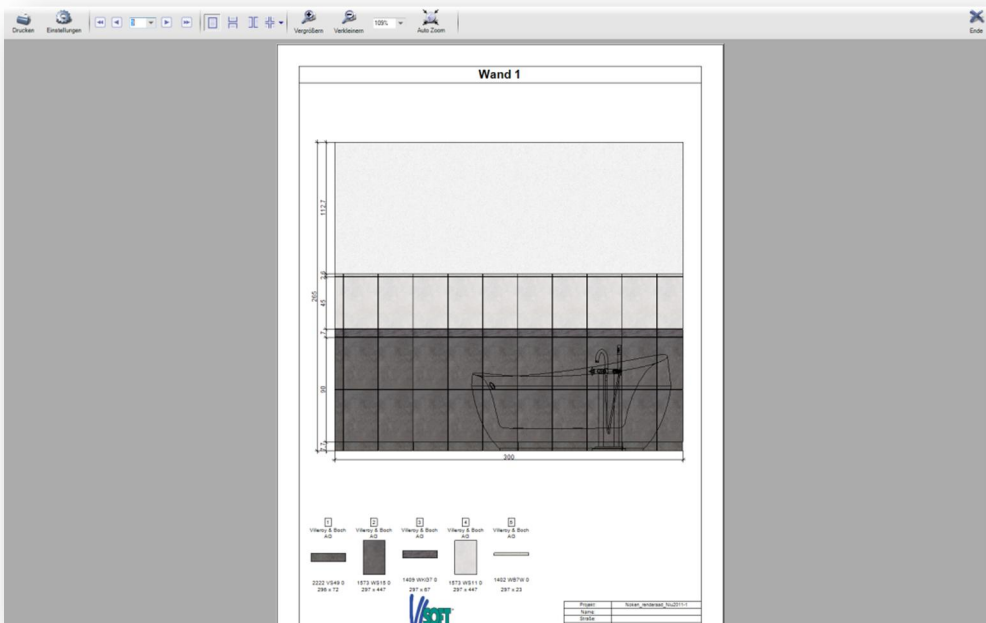
ViSoft cannot provide you with those files on DVD's because of the license rights.



2 THE FOLLOWING FUNCTIONS HAVE BEEN FURTHER IMPROVED

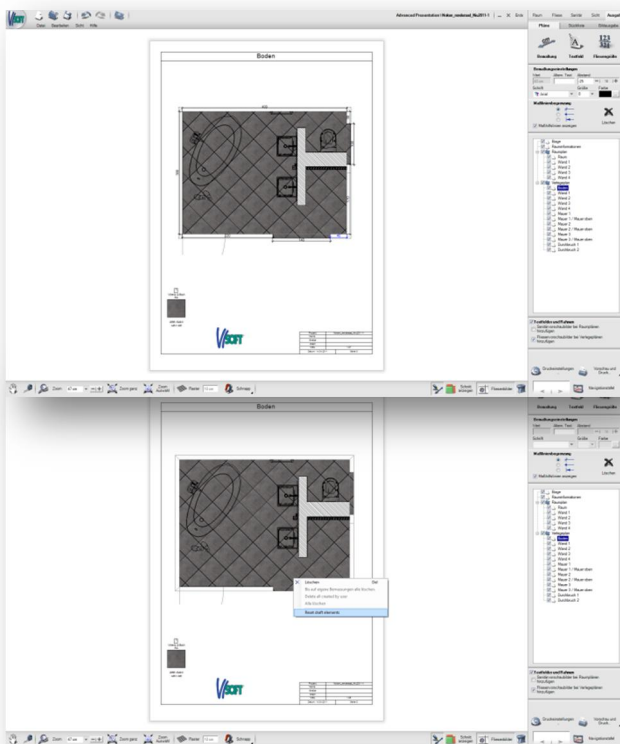
2.1 MORE DETAILS IN OUTPUT

The plan printouts contain additional informative details like pictures of placed tiles.



2.2 RESETTING DRAFT ELEMENTS OF A PLAN

As you know any automatically placed dimension in menu Output – Plan can be deleted or moved manually. You can also add custom dimensions. In case you dislike your changes you can now easily return to the original state of dimensions by right-clicking the plan and choosing **Reset draft elements** from the context menu.



2.3 AUTOMATIC UPDATE OF YOUR TILES MANUFACTURERS

You only work with a certain number of tiles manufacturers and therefore use only specific part of the ever-evolving tiles database? Now

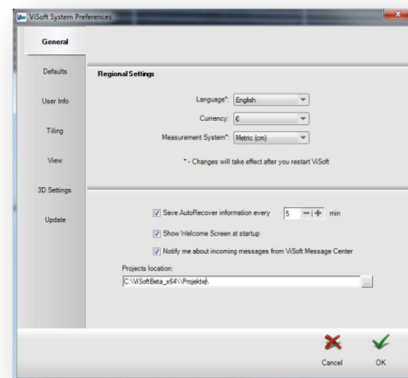
there is no more need for manual selection and ticking.

At every tiles database installation ViSoft Premium automatically recognizes tiles of which manufacturers were used in your previous planning and ticks them on the list.

It goes without saying that you can still manually add or remove any manufacturer you wish.

2.4 BETTER NETWORK PERFORMANCE

Working with projects saved on network under certain circumstances lead to a loss in computer performance. But no more.

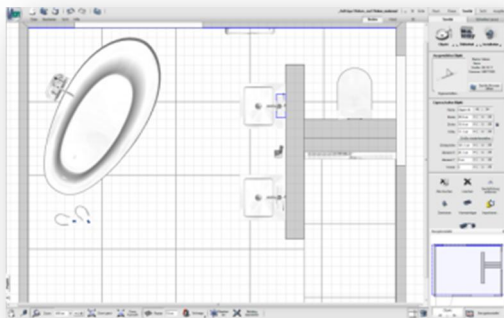


2.5 PRESENTATION OF SANITARY WARE OBJECTS

3D representation of sanitary ware objects has again improved by an optical interference: they now appear even more brilliant on screen. They bear also more realistic reflection during the real-time movement of camera.

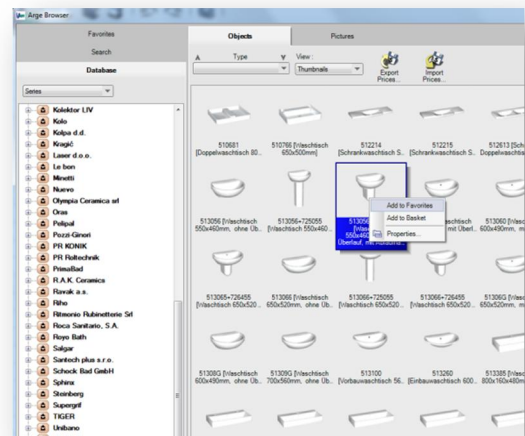


This improvement is visible also when using sanitary ware pictures in 2D view.



2.8 ADDING SANITARY WARE TO FAVORITES

Until now sanitary ware objects had to be added to favorites one by one. Now you can select several objects either by a marquee or by holding down CTRL key. After that click a right mouse button and select Add to favorites.



2.6 MEASURING OF ROUND MURALS

Up to this version the measures of round murals have been missing on printouts. This imperfection is corrected: all round murals are now automatically measured.

2.7 PRINTING PLANS

Each plan can now be printed in a way that it will either fit on a single A4 page or split. In this case, i.e. with larger floor plans and exceptional resolution, a red line appears exactly where the printed pages have to be cut apart. This enables you to easily assemble pages after printing.

In this way also large scale projects can be brought to paper without error.



2.9 PERFORMANCE OPTIMIZATION

ViSoft Premium has undergone a series of general enhancements in the program code which improve functionality, performance and user-friendliness. It would be too intricate to introduce all of the 88 changes on this place. But you as a regular ViSoft user will quickly notice them during every day work.

Your planning with ViSoft Premium 2011-2 will appear more fluid and very stable even when using functions which bring your computer close to its performance limit.

